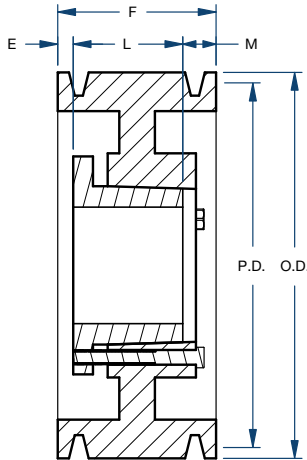


# Sheaves

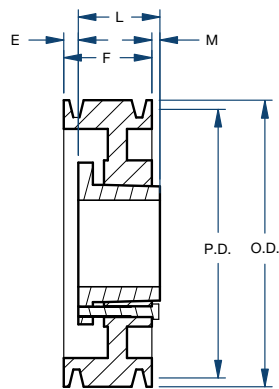
## 8V SERIES 5 GROOVE/QD



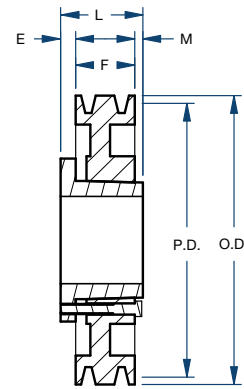
# BLACKSTAR®



Type A



Type B



Type C

Part Number	Bushing	Bore Range	Type	Diameter (in)		Dimensions (in)				Weight less Bushing (lbs)
				Pitch	Outside	E	F	L	M	
5-8V1250F	F	1 – 4	A	12.30	12.50	31/32	6	3-3/4	1-9/32	82.0
5-8V1320F	F	1 – 4	A	13.00	13.20	31/32	6	3-3/4	1-9/32	89.0
5-8V1400F	F	1 – 4	A	13.80	14.00	31/32	6	3-3/4	1-9/32	99.0
5-8V1500F	F	1 – 4	A	14.80	15.00	31/32	6	3-3/4	1-9/32	103.0
5-8V1600F	F	1 – 4	A	15.80	16.00	31/32	6	3-3/4	1-9/32	111.0
5-8V1700J	J	1-1/2 – 4-1/2	A	16.80	17.00	9/16	6	4-5/8	13/16	119.0
5-8V1800J	J	1-1/2 – 4-1/2	A	17.80	18.00	9/16	6	4-5/8	13/16	131.0
5-8V1900J	J	1-1/2 – 4-1/2	A	18.80	19.00	9/16	6	4-5/8	13/16	142.0
5-8V2000J	J	1-1/2 – 4-1/2	A	19.80	20.00	9/16	6	4-5/8	13/16	151.0
5-8V2120J	J	1-1/2 – 4-1/2	A	21.00	21.20	9/16	6	4-5/8	13/16	167.0
5-8V2240M	M	2 – 5-1/2	B	22.20	22.40	11/32	6	6-3/4	1-3/32	178.0
5-8V2480M	M	2 – 5-1/2	B	24.60	24.80	11/32	6	6-3/4	1-3/32	201.0
5-8V3000M	M	2 – 5-1/2	B	29.80	30.00	11/32	6	6-3/4	1-3/32	243.0
5-8V3550M	M	2 – 5-1/2	B	35.30	35.50	11/32	6	6-3/4	1-3/32	278.0
5-8V4000M	M	2 – 5-1/2	B	39.80	40.00	11/32	6	6-3/4	1-3/32	340.0
5-8V4450N	N	2-7/16 – 5-7/8	C	44.30	44.50	1-1/8	6	8-1/8	1	418.0
5-8V5300N	N	2-7/16 – 5-7/8	C	52.80	53.00	1-1/8	6	8-1/8	1	496.0